

Инструкция по монтажу
 Návod k montáži
 Instrukcja montażu
 Instrucțiuni de montaj
 Montaj kılavuzu

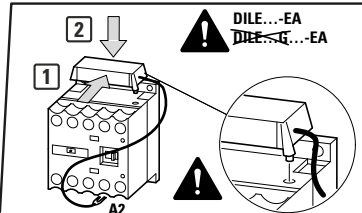
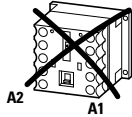
EATON

Powering Business Worldwide

09/21 IL034040ZU

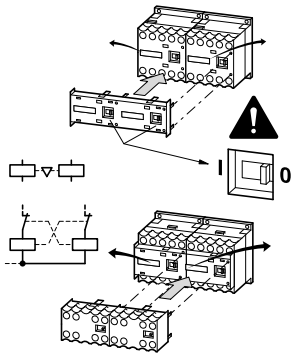
DILE...-EA, DILE...G...-EA

Монтажное положение: любое, кроме ...
 Poloha při montáži - libovolná, kromě ...
 Pozycja montażu - dowolna, oprócz ...
 Poziție de montaj - aleatorie, în afară de ...
 Montaj kılavuzu - herhangi biri, şu hariç: ...

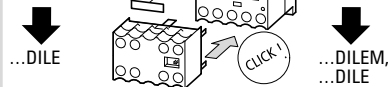


	A1 A2	A1 A2		
DILE...-EA (AC only)	-	X	X	X
DILE...G...-EA (DC only)	X	X	X	X

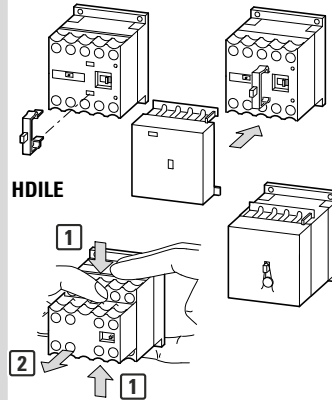
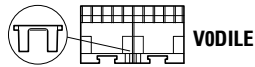
MVDILE



DILER-40(-G)...-EA
 DILER-31(-G)...-EA
 DILER-22...-EA
 DILEEM-01(-G)...-EA
 DILEM-01(-G)...-EA
 DILEM12-01(-G)...-EA
 DILEEM-10(-G)...-EA
 DILEM-10(-G)...-EA
 DILEM12-10(-G)...-EA
 DILEM4(-G)...-EA



DILER-22(-G)...-EA...DILE(M)
 Front mount auxiliary contacts
 cannot be used on DC Voltages



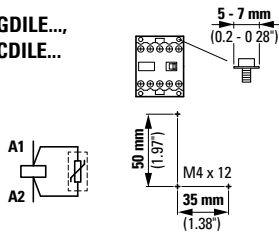
Z2 \oplus 1.2 Nm (10.6 lb-in)

8 mm (0.31") **DILE(E)M...(-G)...-EA**
DILER...(-G)...-EA
...DILE(M)

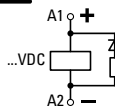
	2 x 0.75 - 2.5 mm ²
	-
	2 x 0.75 - 1.5 mm ²
AWG	18 - 14

© 2017 Eaton Industries GmbH
Eaton.com/documentation
Eaton.com/after-sales
Eaton.com/recycling

**VGDILE...
 RCDILE...**



For DC Voltages



Комбинации вспомогательных контактов
 Kombinace pomocných kontaktů
 Kombinacje wyłączników pomocniczych
 Combinații de întrerupătoare auxiliare
 Yardımcı şalter kombinasyonları

EU: Eaton Industries GmbH, Hein-Moeller-Straße 7-11,
 53115 Bonn, Germany

UK: Eaton Electric Ltd., P.O. Box 554, Abbey Park,
 Southampton Road, Titchfield, PO14 4QA, UK



(ru)

Электрический ток! Опасно для жизни!

Только специалисты или
проинструктированные лица могут
выполнять следующие операции.

(cs)

Nebezpečí úrazu elektrickým proudem!

Níže uvedené práce smějí provádět pouze osoby s
elektrotechnickým vzděláním.

(pl)

Porażenie prądem elektrycznym stanowi zagrożenie dla życia!

Opisane poniżej prace mogą przeprowadzać tylko
wykwalifikowani elektrycy oraz osoby odpowiednio
poinstruowane w zakresie elektrotechniki.

(ro)

Atenție! Pericol electric!

Toate lucrările descrise trebuie efectuate numai
de personal de specialitate calificat și de persoane
cu cunoștințe profunde în electrotehnică.

(tr)

Elektrik çarpmasından kaynaklanan ölüm tehlikesi vardır!

Aşağıda belirtilen çalışmalarını ancak uzman
elektrikçiler ve elektrikle ilgili teknik eğitim almış
kişiler tarafından gerçekleştirilebilir.