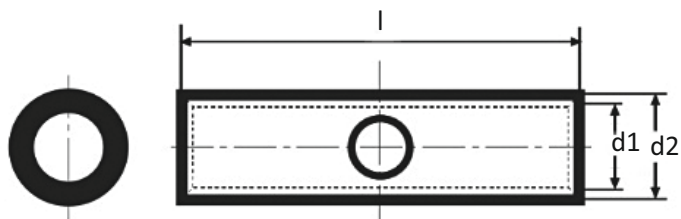




Złączki kablowe SE EM

materiał: miedź cynowana
min. warstwa pocynowania: 3µm



TYP	PRZEKRÓJ [mm ²]	WYMIARY [mm]			OPAKOWANIE [szt]
		d1	d2	l	
SE EM-006	6	3,8	5,5	25,0	10
SE EM-010	10	4,5	7,0	30,0	10
SE EM-016	16	5,5	8,5	35,0	10
SE EM-025	25	7,0	10,0	40,0	10
SE EM-035	35	8,5	12,0	45,0	10
SE EM-050	50	10,0	14,0	50,0	10
SE EM-070	70	12,0	16,5	55,0	10
SE EM-095	95	13,5	18,0	60,0	1
SE EM-120	120	15,0	19,5	65,0	1
SE EM-150	150	16,5	21,0	70,0	1
SE EM-185	185	19,0	24,0	75,0	1
SE EM-240	240	21,0	26,0	85,0	1