

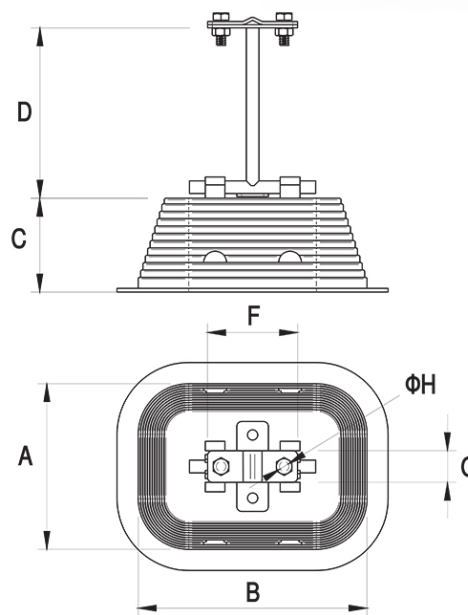
Dachleitungshalter aus Beton, Kunststoffhülle, für Flachdächer, hoch

Nr katalogowy:
93050211

Typ:
30.2/W

Wersja materiałowa:
PCV-Beton

For fixing wire on the flash roofs. For higher conductor lead. Can be glued to roof surface using glueing composition ELKO- FIX 99300199 or membrane glue 11000599. Use only 8 mm wire. Glue assembly details, see: www.elkobis.com.



TYP	A	B	C	D	F	G	H	Gewicht
30.2/W	105	145	60	100	57	20	7	~1,2 kg

